



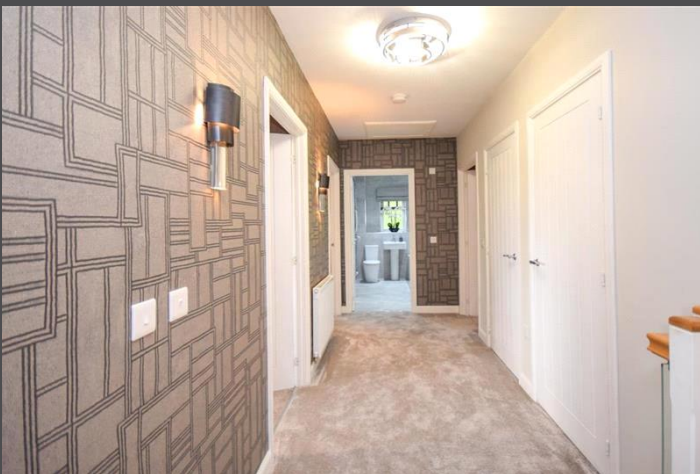
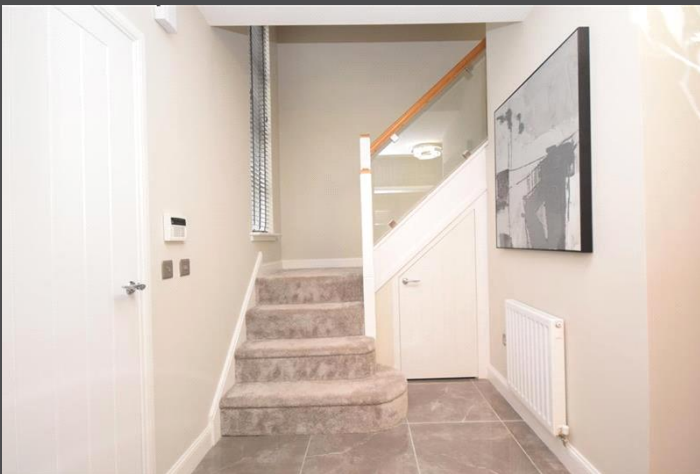
**Barrie Avenue, Bothwell, Glasgow**  
**Offers Over £695,000**

5 Bed Detached House



Whilst every effort is made to ensure the accuracy of these details, it should be noted that the measurements are approximate only. Floorplans are for representation purposes only and prepared according to the RICS Code of Measuring Practice by our floorplan provider. Therefore, the layout of doors, windows and rooms are approximate and should be regarded as such by any prospective purchaser. Any internal photographs are intended as a guide only and it should not be assumed that any of the furniture/fittings are included in any sale. Where shown, details of lease, ground rent and service charge are provided by the vendor and their accuracy cannot be guaranteed, as the information may not have been verified and further checks should be made either through your solicitor/conveyance. Where appliances, including central heating, are mentioned, it cannot be assumed that they are in working order, as they have not been tested. Please also note that wiring, plumbing and drains have not been checked.











A truly breathtaking five-bedroom detached home located within one of Bothwell's most sought-after developments. The property has been beautifully designed by the current owner and is presented to the market in "show home" condition throughout.

This stunning property benefits from luxury fittings throughout and is a perfect example of modern living.

The property for sale occupies the desired corner plot and on arrival, you are welcomed by mature garden grounds and a mono-block driveway allowing excellent parking facilities for several vehicles.

Internally the accommodation comprises a reception vestibule, a grand hallway, a front-facing lounge, an open-plan kitchen/dining/sitting area with patio doors that lead to the garden, a utility room, a spacious games room with a unique bar, and a W/C.

On the upper level, there are five good-sized bedrooms, two master en-suites, and a stunning four-piece master bathroom.

The garden grounds at the rear are truly superb, offering various patio areas, a neat lawn, a mixture of bordering greenery, a bespoke hot tub area, and a truly incredible outhouse which is currently being used as a snug room with a home bar. The grounds are enclosed by timber fencing and offer excellent exposure to sunlight in the summer months making them perfect for family barbecues and entertaining guests.

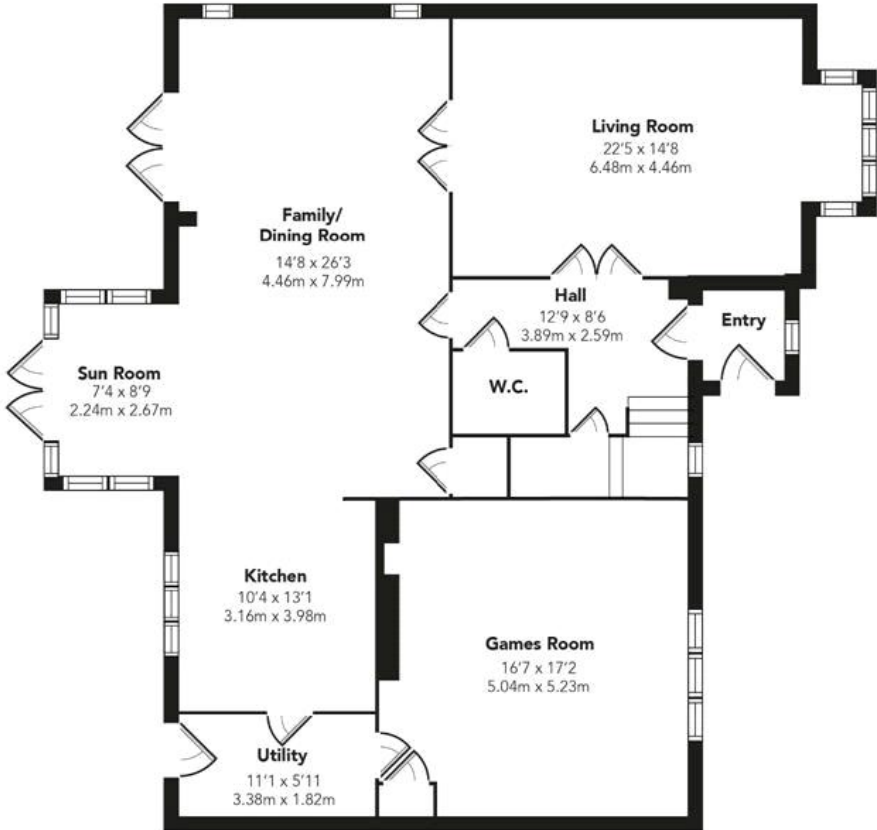
## Location

Bothwell remains one of South Lanarkshire's most popular villages and is

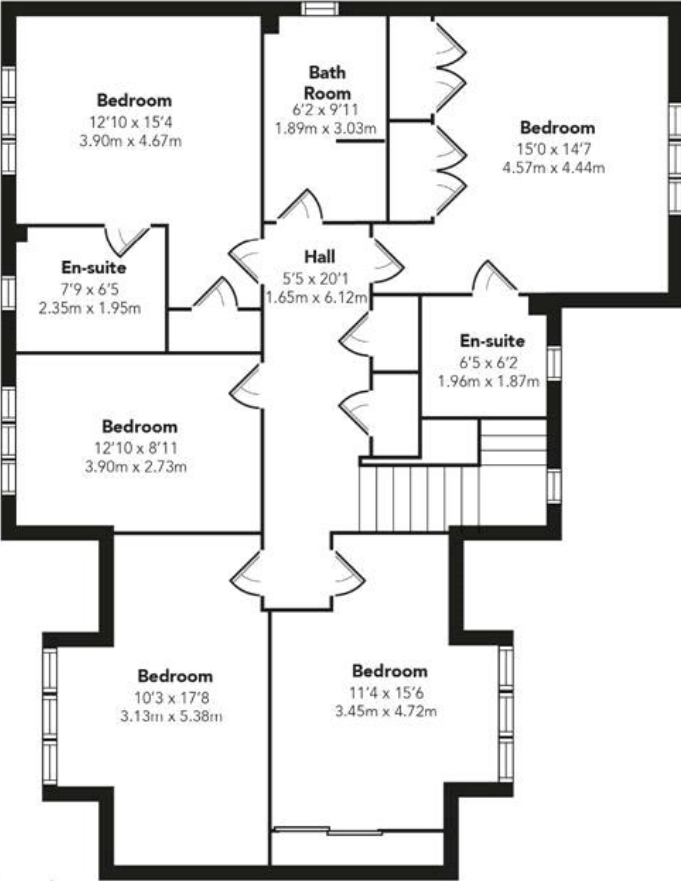
- Detached
- Five Bedrooms
- Luxury Interior
- Open plan Kitchen/Dining
- Beautifully Presented
- Bright and Spacious
  
- Large garden
- Unique outhouse
- Driveway
- Sought After Location
- Sought After Development



**GROUND FLOOR**



**FIRST FLOOR**



Floorplans are indicative only - not to scale  
Produced by Plushplans 