



Oakbank, Lesmahagow, Lanark
Offers Over £215,000

4 Bed Detached House | Freehold



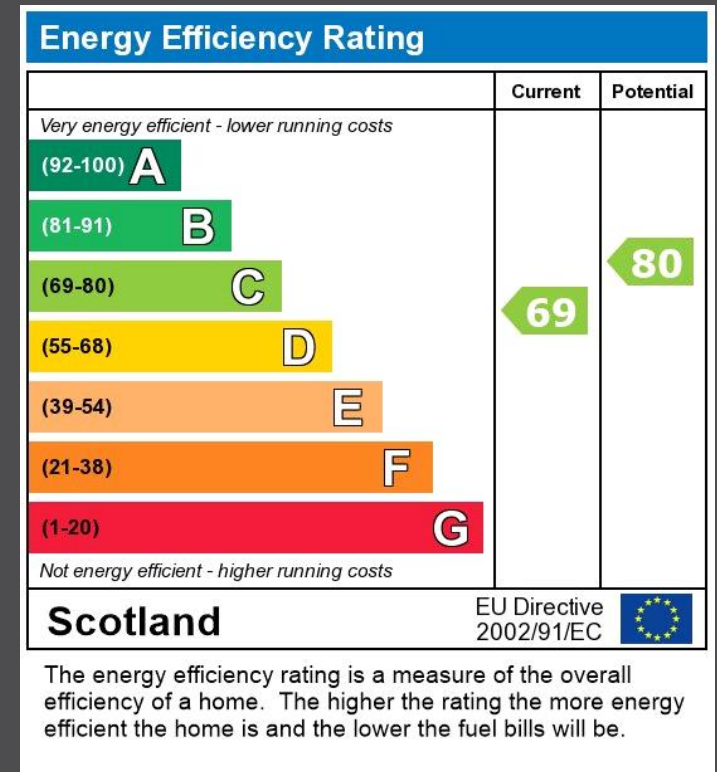
Whilst every effort is made to ensure the accuracy of these details, it should be noted that the measurements are approximate only. Floorplans are for representation purposes only and prepared according to the RICS Code of Measuring Practice by our floorplan provider. Therefore, the layout of doors, windows and rooms are approximate and should be regarded as such by any prospective purchaser. Any internal photographs are intended as a guide only and it should not be assumed that any of the furniture/ fittings are included in any sale. Where shown, details of lease, ground rent and service charge are provided by the vendor and their accuracy cannot be guaranteed, as the information may not have been verified and further checks should be made either through your solicitor/conveyance. Where appliances, including central heating, are mentioned, it cannot be assumed that they are in working order, as they have not been tested. Please also note that wiring, plumbing and drains have not been checked.

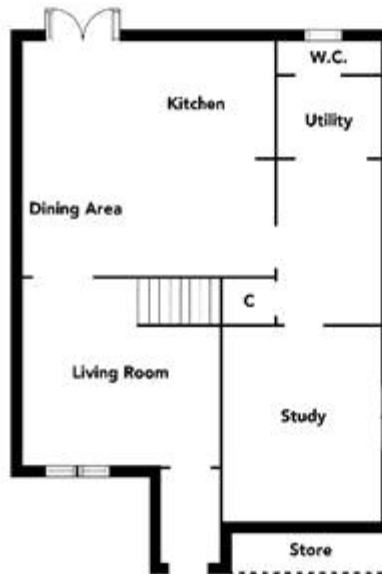
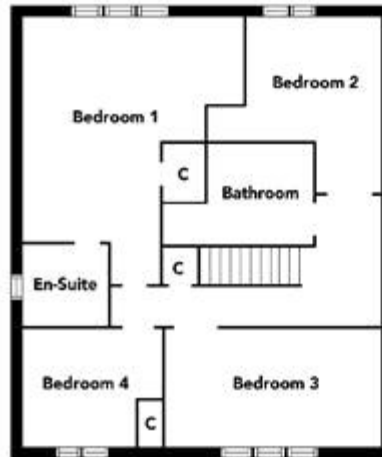
A thoughtfully extended and beautifully presented four bedroom detached villa located within a wonderful cul-de-sac setting. Oakbank is minutes from amenities in Lesmahagow and less than five minutes drive from both North and Southbound routes of the M74 motorway. As such the property could be perfect for those commuting towards Glasgow by car and also seeking a village lifestyle with proximity to open countryside. Lesmahagow benefits from a recently completed Tesco Supermarket with a petrol station and the village centre offers; bank, cafe and a variety of local amenities. Further amenities can be reached with ease in surrounding towns of Larkhall, Lanark, and Hamilton.

On arrival at the property, you are welcomed by a large mono-block driveway that allows excellent parking facilities for a number of vehicles. The garden grounds have been designed primarily for ease of maintenance and comprise artificial grass, patio and timber fencing.

This fantastic modern home has been completely reconfigured from the original layout and offers substantial living space over two levels. The accommodation comprises reception hallway, front-facing lounge, open plan kitchen/dining area with feature wood burner, utility room, W/C and downstairs study. On the upper level, there are four bedrooms with master en-suite and a three-piece bathroom.

Tenure: Freehold





Floorplans are indicative only - not to scale
Produced by Flush Plans Ltd



Viewing by appointment only
Momo Homes

137 Main Street, Wishaw, Lanarkshire ML2 7AU

Tel: 01698 517045 Email: mail@momohomes.co.uk Website: www.momohomes.co.uk